

Complimentary 2024-2025

A Guide to Glocester

**SUPPORT
LOCAL
BUSINESSES**

Glocester Business Association

Est. 1639



www.discoverglocester.com



If you love cheesecakes then come and check us out.

We are a small bakery located in Chepachet RI.
Our main focus is on making the best cheesecakes ever!

All of our cheesecakes are made from scratch
and baked throughout the week.

We have over 30 different flavors that we offer.
Our menu is constantly changing with the seasons.
We also offer coffee and espresso on a daily basis.
We use only the best from Good As Gold Coffee.

Besides cheesecakes we do offer a limited amount of other
desserts and pastries including cake pops.
We are always looking to add new and exciting options to the menu.

Open Tuesday - Saturday 11am to 7pm
Sunday 11am to 5pm

1195 Putnam Pike, Chepachet, RI
www.whocutthecheesecakellc.com



The Glocester Business Association welcomes you!

Located in northwest Rhode Island, Glocester is home to two villages, Chepachet and Harmony. It's a delightfully rural community, dotted with forests and lakes, historic buildings and sites, parks and hiking trails, award-winning schools, and thriving small-town businesses. It's a beautiful place in which to live, work, and play!

Our town boasts a robust business community of shops, restaurants, and services, many of which are active members of the Glocester Business Association. Visitors can find treasures in the antique shops, enjoy a great meal in our restaurants, explore the many historic buildings built in the 18th and 19th centuries, and delight in the numerous hiking trails winding through our quiet woods.

Festive events keep the town bustling throughout the year, and all are invited to join in the fun – the Glocester Business Association's Family Fun Day in June, the famous Ancients & Horribles Parade in July, the GBA's Annual Trick or Treat on Main Street in October, and the Glocester Heritage Society's Candlelight Shopping throughout December featuring the GBA's life-sized Santa & Reindeer display.

We invite you to visit Glocester and discover why our town is cherished by residents and visitors alike!

Sincerely,

The Glocester Business Association
www.glocester.org



This publication is
Published & Distributed by:

GDP

GLOBAL DESIGN & PUBLISHING LLC

860-382-3832 • kelly@gdpublishing.com
www.gdpublishing.com

Design/Photography: Provided by GBA & Merchants • **Marketing & Sales:**

Kelly Tourtellotte • **Writer/Editor:** Caroline Sloat

All design and text is provided by Global Design & Publishing, LLC. All text and images have been carefully compiled for this publication. However, we do not guarantee the accuracy of the content. Cover Photo: provided by the GBA.

Copyright ©2024, Global Design & Publishing, LLC. Any reproduction without our written permission is prohibited.



Keep Glocester Prosperous ... Support Local Businesses!

**Glocester Business Association
PO Box 327 • Chepachet, RI 02814**



Glocester Business Association

A big welcome from the Glocester Business Association, a dynamic network of business owners and supporters who promote and support Glocester's business community.



In this spirit, we underwrite this publication and the opportunity to highlight the events that make Glocester a lively community and a delight to visit. The seasonal

calendar of events reflects the GBA's long tradition of sponsorship and partnering with the citizens to help our community prosper. We give locally to our area food pantries and our Town's animal shelter, and support our schools with mentor programs and scholarships. We also sponsor GBA's Family Fun Day and Trick or Trick on Main Street, and support the annual Ancient and Horribles Parade. All of this, plus the lamppost banners, the "Welcome To Glocester" signs, and the guide you are reading. **www.glocester.org**



Economic Development Commission (EDC)

The EDC has been working towards the revitalization of Chepachet Village since the early 1990's beginning with the Chepachet Village Planning Project, which outlined goals, recommendations and implementation steps to spur economic and historic revitalization. The Town has been steadily working its way towards implementing the steps outlined in a plan to create an environment in which the Village's resources can thrive and expand.

www.glocesteredc.org

INSIDE

5	History	14	Farms & Orchards
6	Town Leaders & Organizations	16-17	The Great Outdoors
8-9	Events	18	Educational Services
12	Shop, Dine, Stay & Relax	20	Business & Personal Services

HISTORY



Gloucester Heritage Society

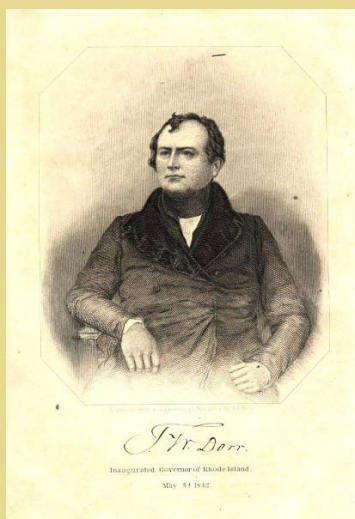
Gloucester's history is preserved and interpreted through the three historic buildings the society maintains: The Job Armstrong Store (c1814), the meeting place for society members and the storehouse of a growing archive of historic photographs, documents and unique collections of artifacts relating to Gloucester's past; Evans Schoolhouse, built c1855-67 and restored in 2003, located behind the Gloucester Town Hall; and the Dr. Reuben Mason House, built before 1756 and located on Putnam Pike at Acote's Hill, the focus of recent preservation efforts and programs.

European settlers arrived by 1706 to farm the land, and by 1750 had begun to establish manufacturing: a paper mill, a gristmill, and iron-forging. By the early nineteenth century, the balance between farming and industry shifted toward the latter, with sites on Gloucester's abundant streams developed for water powered manufacturing. The villages of Harmony, Clarkville, and Spring Grove were established as part of the industrial developments of the nineteenth century.

A thriving commercial hub soon emerged. The Job Armstrong Store is a reminder of businesses that emerged to serve this growing community. The Evans Schoolhouse was one of several district schools built to serve the families that lived on the farms and worked at the mills. Various taverns offered entertainment for the citizens of the town, including the touring menagerie that brought Betty the Learned Elephant to town.

In 1842 Acote's Hill was the site of an uprising by followers of Thomas Dorr. The Dorr Rebellion was short-lived, however; Dorr's supporters gathered with a cannon on the hill, but were soon overpowered by the Rhode Island Militia. In 1850, the Chepachet Cemetery Association was formed and established a cemetery at the site of the former battleground.

www.gloucesterheritagesociety.org



TOWN LEADERS & ORGANIZATIONS



Glocester Lions Club

Matthew Salisbury, President
16 Terry Lane
Chepachet, RI 02814

Friendship Lodge #7

1167 Putnam Pike
Chepachet, RI 02814

Glocester Light Infantry

33 Dorr Drive
Chepachet, RI 02814
(401) 569-1127
glocesterlightinfantry@gmail.com

Rep. Michael Chippendale

124A Johnson Road
Foster, RI 02825
401-497-4495

Conservation Commission

Albert K. Aubin, Chair
PO Box B
Chepachet, RI 02814

Economic Development Commission

Bernadette MacArthur, Chair
PO Box B
Chepachet, RI 02814

Historic District Commission

Charlie Wilson, Chair
PO Box B
Chepachet, RI 02814



Glocester Land Trust

Janine Pitocco, Chair
PO Box HH
Chepachet, RI 02814
j.pitocco@glocesterlandtrust.org

Town of Glocester

Karen Scott, Town Planner
PO Box B
Chepachet, RI 02814
401-568-6206, ext. 209
karenscott@glocesterri.org

Recreation Department

Robert Shields, Director
PO Box B
Chepachet, RI 02814
401-568-6206, ext. 224
r.shields1@gmail.com

Glocester Senior Center

Melissa Bouvier, Director
1210 Putnam Pike
Chepachet, RI 02814
401-567-4557
melissabouvier@glocesterri.org



Glocester Business Association Members

Advertising & Marketing

Bargain Buyer

Alterations/Tailoring

Kerry's Alterations

Animal Care & Training

Lazybones Dog Training

Mind Your Dog

PawParazzi Dog Grooming

Antiques & Collectibles

The Town Trader

Arts & Artisans

The Creative Room

The Hen House

Lakeshore Designs RI

Listen to Your Art

Money Hill Tattoo

Automotive

Auto Audio & Accessories

Auto Body Concepts

Knighthawk Auto

Banking & Finance

Citizens Bank

DeBlois Financial Associates

dSi Payroll

Navigant Credit Union

Ucran & Company

Beauty Salons/ Barber Shops

HairCraft Studios

Tyler Keach ~ Signature Salon

Loreen's It's All Hair

Penny Lane Hair Studio

Polished Beauty Lounge

Boating/Hunting/Fishing

Big Bear Hunting & Fishing

Inland Marine

Lakeview Dock Solutions

Contractors & Services

Barnes Concrete Co., Inc.

Catcon, LLC

ECHO Associates, Inc.

ECHO Septic Services, LLC

F&M Home Improvement

Lussier's Construction, Inc.

Luxury By Leonard

D. Mulcahey's Pumps/Wells

N.E. Disaster Restoration

New England Roofing

Northwest Overhead Door

Precision Energy Systems

ProSeed America

R. J. Lawn Care

Ryan's Appliance Repair

Steere Farm

Larry Torti Septic Services

S. H. Winsor Construction

Dentists & Orthodontists

Romani Orthodontics

Education & Child Care

Acorn Academy

Aldersgate Camp & Retreat

Chepachet Village Schoolhouse

Foster-Glocester Regional

Harmony Hill School

The Learning Place Preschool

Ponaganset Education Fdn.

Entertainment

Jumpalooza

Environmental

Lake Shore Environmental

Malec Tree Service

Farms & Orchards

Barden Family Orchard

The Farm

Liberty Farm

Rusty Buckle Petting Zoo

Groceries & Bakeries

DePetrillo's Pizza & Bakery

Dino's Park & Shop

Who Cut The Cheesecake

Hobbies

Wicked Treasures

House & Home

Affordable Self Storage

Clean Slate Estate

CPI Oil

Reichert & Sons Fuel Oil

Think Green Think Air Duct

Whisky Pearl

Insurance

Apple Valley Insurance

Chestnut Hill Insurance

Landscaping & Lawn

Greenskeeper

J&D Landscaping & Lawn

Liquor Stores

Chepachet Village Wine & Spirits

Kitson's Liquors

Medical & Mental Health

Active Bodyz Therapy Services

Glocester Family Chiropractic

So Others May Heal

Stillwater Primary Care Ltd

Motels & Campgrounds

Oakleaf Campground

White Rock Motel

Organizations/Non-Profits

Mother of Hope Camp

SENE Film, Music & Arts

Pest Control

Debug Pest Control

Photography

John Pitocco Photography

Real Estate

D. Burlingame ~ RE/MAX Bell Pk.

Century 21 Limitless

CrossRoads Real Estate

Andy Goulet ALLTOWN R/E

Michelle Keach ~ Coldwell Banker

Long Realty, Inc. ~ Greg Coupe

RE/MAX Host of Homes

Melanie Rose Realtor

Twin Pines Building Company

The Village On Chopmist Hill

Williams & Stuart ~ DiGiulio

Restaurants & Catering

Aegean Pizza

Assados Kitchen & Bar

Barbara's Quick Lunch

Cady's Tavern

Cow's Tail Restaurant/Creamery

The Gentleman Farmer

Groundwater Café

The Harmony Corner Store

Hill's Tavern & Grill

Little B's BBQ

Pinewood Pub & Pizza

Tavern on Main

Shops & Gift Stores

Brown & Hopkins Country Store

Christine's Cottage Florist

Harmony Products

Trish Hampton Pet Boutique

Sports & Recreation

Crystal Lake Golf Club

Vintage Cycles & More

Technology Services

MouseWorks Web Design

Tourism & Travel

Blackstone Valley Tourism

Rhode To Travel

Wellness & Fitness

Healing In Harmony Wellness

Meraki Massage/Holistic Healing

ONE STRONG RI

Soulshine Center for Yoga/Healing

Wineries

Mulberry Vineyards

Supporting Members

Hilary Collings

William Flynn

Ashley Sarji

Frank B. Stevenson

EVENTS

The Gloucester Business Association (GBA) actively supports this community! The current edition of A Guide to Gloucester shines a spotlight on all the ways that the community is served—the range of lively activities for all age groups and supporting the full roster of businesses that make Gloucester a lively place to live and work.



APRIL

Gloucester Little League (GLL) Opening Day

The parade forms at the Town Hall for teams and supporters to march to Acote's Field (1075 Putnam Pike in Chepachet) for opening day ceremony and fun. A great celebration of our players, coaches, and all who work behind the scenes for a successful season of play. Food truck, snack shack open, special contests. <https://www.gloucesterll.com/and Facebook>.

Earth Day

Work and fun to observe Earth Day on a Saturday morning in late April. Volunteers participating in the cleanup meet at the Kent Field Pavilion (1111 Putnam Pike, Chepachet) for assignments, bags, and gloves. The Conservation Commission organizes other family-friendly events and Gloucester Heritage Gardens host a nature scavenger hunt.

MAY

Spring Fair Gloucester Senior Center 1210 Putnam Pike, Chepachet

Crafters, vendors, artisans, bake sale, plant sale and raffles. Food trucks.

Elephant Day

Chepachet's unique event that made national headlines in 1826! Dedicated to the memory of Betty, the Learned Elephant, who toured the east coast until she was shot in Chepachet on May 25, 1826. Members of the Gloucester Heritage Society lead a one-hour historical tour telling Betty's story and display elephant memorabilia at the **Job Armstrong Store, 1181 Main Street.**

Gloucester Memorial Day Parade

The parade begins at St. Eugene's Church and ends at Acotes Cemetery with a ceremony.

JUNE & JULY

Summer Concerts

The Kent Field Pavilion will be rockin' with six programs on Wednesday evenings at 6:30, starting June 26 through July 31. Expect the line-up to include a variety of genres from Classic Country to modern Top Forty. Presented by Gloucester Recreation Department. www.gloucesterri.gov/recreation.htm

Family Fun Day

Mulberry Vineyards, Chepachet

Pony rides, bounce house, craft stations & temporary tatoos for kids. Beautiful scenery, wine for sale, yard games and more!

www.gloucester.org

July 4 Road Races

Registration at Chepachet Union Church from 8am, with start times at 9 am (5.5 and 1.8 miles), 10 am (1 mile 1/2 mile races), and half-mile race. Modest entry fees. Register with Gloucester Recreation.

www.gloucesterri.gov/recreation.htm

ANCIENTS & HORRIBLES PARADE and Independence Day Festivities

This uniquely-Chepachet small-town tradition mocking the Ancient and Honorable Artillery Company of Boston, the oldest military organization in the United States has its own long tradition in Chepachet. Since 1926, patriotic and irreverent participation has been a light-hearted custom at a historic event that also honors local veterans and first responders.

Thursday, July 4 at 4 p.m. the parade steps off, a showcase of local artistic talents, crazy outfits, and outlandish floats. Decorate homes and front yards along the parade route add to the festive scene. Pre-registration required to be eligible for awards in categories such as Most Ancient and Horrible, most patriotic, and best walking group. <https://www.glocesterri.gov/parade.htm>



SEPTEMBER TO CHRISTMAS

Trick-or-Treat on Main Street Chepachet Village

Sponsored by the Gloucester Business Association and local businesses.
www.glocester.org

Village Cooperative. Artisans, Artists, and Crafters at the Job Armstrong Store, Chepachet

Talented co-op members transform the historic rooms into a delightful and colorful holiday shop (plus edible treats).

Every Friday noon to 4:00 p.m. Saturdays and Sundays 10 a.m -5:00 p.m.

Special openings: Black Friday and Candlelight Shopping on Thursday nights in December from 5:00 -9:00 pm. <https://www.facebook.com/villageartcoop/>

Gloucester Scarecrow Festival

A fun community event for all.

www.glocesterscarecrow-festival.org

Candlelight Shopping around Chepachet Village

Thursday nights in December. Vintage street lights illuminate the streets, shops decorated for the holidays, seasonal music, all the old-fashioned

ambiance. Includes Village Coop Artists shop at Job Armstrong Store. Village map guides to open stores. Shuttle bus service, too!

www.candlelightshopping.com



P Aegean
izza
Greek Style Pizza

Up To
30%
Discount



ORDER NOW

401 568-2725
WWW.AEGEANPIZZACHEPACHET.COM
1195 PUTNAM PIKE, CHEPACHET, RI 02814



Rhode to Travel

LUXURY TRAVEL AGENCY

**YES.
TRAVEL AGENTS DO EXIST.**

Rhode to Travel is a full service travel agency, focusing on creating vacations centered around local experiences and boutique-style accommodations, usually with a lot of yummy food mixed in!

SERVICES

- ✓ HONEYMOONS
- ✓ FAMILY
- ✓ FOOD + WINE
- ✓ ADVENTURE
- ✓ BUCKET LISTS



About the Owner

Beth has more than 13+ years of experience in the travel planning world. She lives locally with her husband and rescue pup. When I'm not traveling, you can usually find me in the kitchen, at a winery with friends, or taking our dog for a walk.

Call us 401-500-0701
www.rhodeltotravel.com

Deb Burlingame
RI, CT & MA Real Estate Agent

Top Producer
401-430-0134
RE/MAX Bell Park Realty



dburlingame@remax.net
Each office independently owned and operated



THE TOWN TRADER

~ ANTIQUES ~

The Town Trader is a 3300-square-foot shop with 22 booths. An historic 1690's trading post, it is the oldest structure in Historic Chepachet Village.

The building features hand-hewn beams and a flue-less Beehive brick fireplace that is in the center of the oldest part of the building.

Also known as the Lydia Slocum House, it was the birthplace of Rhode Island Attorney General Ziba Slocum, and was the home of Charles Carlton, Spanish-American War veteran.

**Please visit our shop soon to view our historic building
and the many antique treasures housed here!**

*Chepachet Village Historic District is listed
on the National Register of Historic Properties.*

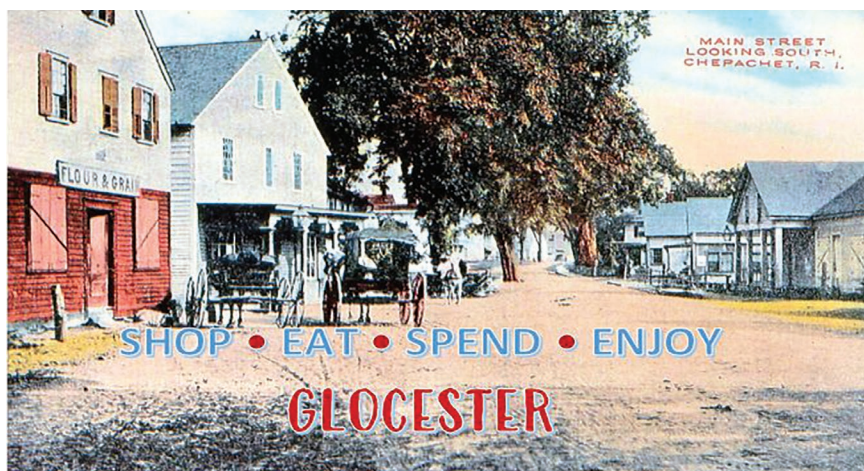


1177 PUTNAM PIKE - ROUTE 44
GLOCESTER, RI 02814
401.568.8800

www.thetowntrader.com

FIND US ON FACEBOOK
towntradershop@gmail.com





Locally owned—and unique: restaurants, cafés, specialty shops, vineyards, yoga, spa services, places to stay, and all here to explore. Take a day, a night, or all weekend to savor Glocester!

Dining comes in many flavors and styles. Eat-in and take-out. Indoors or outside. Go casual for pizza & subs, cafés & bakeries, or perhaps live music at a local tavern. Or more formal at a farm-to-table or upscale restaurant.

Shopping in Glocester is a feast for the senses. Country decor & home products, vintage, antiques & treasures, flowers are waiting in our specialty shops. The creative artisans of Glocester offer classes with activities for all ages, hand-made items & gifts, even a popular tattoo studio. Other categories include health & wellness, bicycles, supplies and care for beloved pets.

For an overnight visit, choose from family-run motels or campgrounds, or an Airbnb on the waterfront or in the countryside. Pick your own fruit or taste the wine at our farms & vineyards, relax at a spa or yoga studio, or take a scenic hike along the trails featured on pages 16 & 17 of this guide.



GROUNDWATER

CAFE • MARKET • TAPAS BAR
985 Choppmist Hill Road
N. Scituate, RI 02857
401.321.3131
www.groundwatercafe.com

Groundwater Cafe, your local convenient community spot for breakfast, lunch, baked goods, snacks, beverages, and necessities.

We're dedicated to giving you the very best, with a focus on customer service, locally sourced foods, and a unique experience.

CAFE

Delicious and unique options for breakfast and lunch sandwiches and extensive coffee, tea and smoothie menu.

MARKET

Visit our market to find unique local products to fill your pantry and refrigerators

ICE CREAM STAND

35+ Flavors
Non-dairy and gluten free options
Fun outdoor space!

COMING SOON

Tapas, small plates and appetizers
Beer and Wine



Portraits
Family ~ Senior ~ Equine

John Pitocco Photography

john@johnpitocco.com

(401) 477 - 6517



FARMS & ORCHARDS

Spend the day exploring our local farms, pick your own apples, peaches, berries and more, purchase local maple syrup, enjoy the Farmer's Market and during the holidays find the perfect locally-grown Christmas tree!

Barden Family Orchard

56 Elmdale Road, No. Scituate

Pick your own quality apples, peaches, and berries in season. Pick your own pumpkins most years. Sweet apple cider pressed on farm with our apples; jams with our fruit; sweet corn and apple cider doughnuts.

Farm Market Open daily 9am – 6pm August to Halloween. November: 10am – 5pm until Thanksgiving.

www.bardenfamilyorchard.com

Chepachet Farms and Sugar House

226 Tourtellot Hill Road, Chepachet

Producers of local maple syrup and other maple products, sold at the farm and selected area food stores and markets.

www.chepachetfarms.com

Harmony Farms

359 Sawmill Road, No. Scituate

Pick your own raspberries, blueberries, apples (check Facebook or website for days/hours).

www.harmonyfarmsri.com



Gloucester Farmers Market Pavilion at Kent Field

1111 Putnam Pike, Chepachet

Handmade and locally grown produce.

Sundays in July and August, 10am – 1pm.

Grace Note Farm

969 Jackson Schoolhouse Road, Pascoag

Horse farm, boarding, trail rides

Bed-and-breakfast and farm stay programs

Music at the Farm concerts.

www.gracenotefarmweb.com

Liberty Farm

60 Ironmine Rd, Burrillville

Farm-raised beef, chicken, turkey, pork, and free-range eggs. By appointment.

<https://www.libertyfarm.net/>

Petersen Farm

451 Putnam Pike, Chepachet

Christmas trees and wreaths (until sold out).

401-949-0824 or Find us on Facebook

The Farm in RI

463B Tourtellot Hill Road, Gloucester

Certified organic produce sold to CSA customers subscribing for the growing season.

Farm shares include organic produce, flowers, and baked goods on scheduled pick up days.

Pre-order plant sale in spring; apply on line for seasonal farm share.

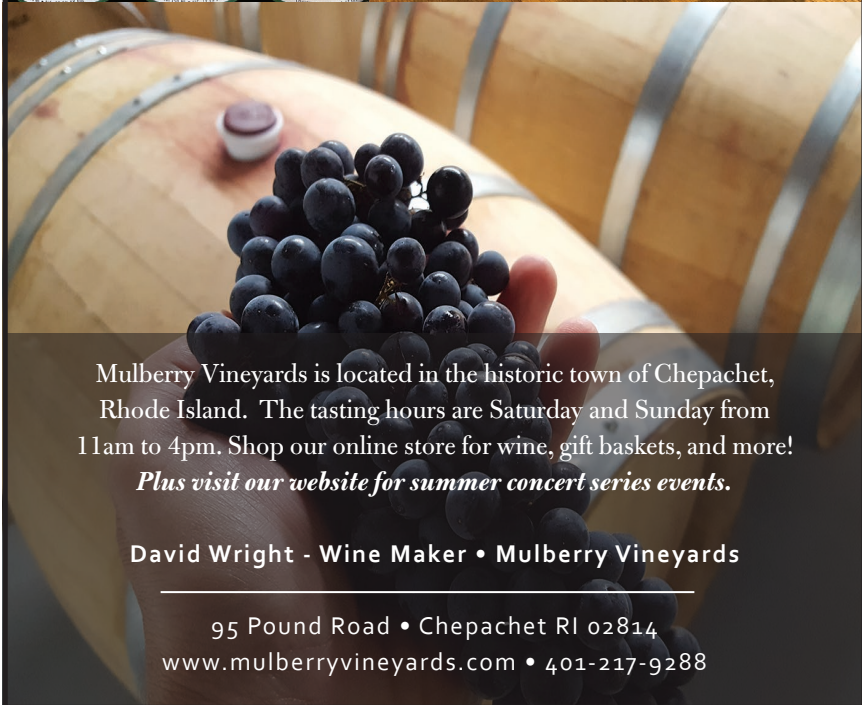
www.thefarminri.com

The Rusty Buckle Petting Zoo & Pony Rides

138 Tourtellot Hill Rd, Gloucester

Visit our farm or our rides can come to you for your event.

<https://therustybucklepettingzoo.com/>



Mulberry Vineyards is located in the historic town of Chepachet, Rhode Island. The tasting hours are Saturday and Sunday from 11am to 4pm. Shop our online store for wine, gift baskets, and more!

Plus visit our website for summer concert series events.

David Wright - Wine Maker • Mulberry Vineyards

95 Pound Road • Chepachet RI 02814
www.mulberryvineyards.com • 401-217-9288



GREAT OUTDOORS

If you love to be outdoors including: hiking, biking, birding, boating, golf and more Gloucester does not disappoint!

Town of Gloucester Recreation Department

Winter adult coed basketball, volleyball
Summer: running conditioning (middle school), tennis camp, learn to swim at town beaches. Youth Track and Field Day, Fourth of July road race.

www.glocesterri.org/recreation.htm

Aldersgate Camp and Retreat Center

1043 Snake Hill Road, Gloucester

Fun, affordable spiritual day and overnight youth camping; retreat facilities available year round. www.campaldersgate.com

Blackstone Valley Tourism Council

175 Main Street, Pawtucket

National Park Visitor Center for the Blackstone Valley Heritage Corridor
Maps and brochures & souvenir shop.
www.tourblackstone.com

Crystal Lake Golf Club

Route 102, Mapleville

18 - hole course on 70 acres, ProShop;
Golf 7am – 5 pm; restaurant open daily at 11am during golf season. Golf outings, weddings & banquets. Pro Shop.
Reserve tee-times and carts on line.
www.crystallakegolfclub.com

George Washington State Campground

2141 Putnam Pike, Chepachet

Primitive overnight camping at Bowditch Reservoir Camping Area. Tents, trailers, RVs, and four cabins (no utilities). Mountain biking, hiking, swimming, fishing, canoeing and cross-country skiing. Reserve online
<https://riparks.ri.gov/campgrounds/camping-area-descriptions-specific-requirements#gw>

Mother of Hope Camp

1589 Putnam Pike, Chepachet

A mission of the Roman Catholic Diocese of Providence. Recreational, educational, and spiritual activities ACA American Camp Association® Accredited
www.motherofhopecamp.com

Oakleaf Family Campground

43 Oak Leaf Way, Chepachet

Family and pet-friendly. 60 campsites with water and electric. Weekend and seasonal camping. Late April–October
www.oakleafcampground.com

Pulaski State Park and Recreational Area

151 Pulaski Road, Chepachet

A “day-use” site adjacent to the George Washington Management Area. Hiking, swimming, fishing, picnics, cross-country ski trails.
<https://riparks.ri.gov/parks/pulaski-state-park>



Glocester Land Trust—conservation and education

With 13 locations visitors will enjoy hiking, fishing, cycling, cross-country skiing, bird watching, and peaceful walks. Marked and maintained trails at Sprague Farm and Steere Hill-Phillips Farm. Trail maps and location information online. Join the Land Trust to preserve the land as a member, volunteer, and donor.

www.glocesterlandtrust.org



GLT Properties & Geocoordinates:

Robert Huckins Woodland • 41.9185, -71.7170
Hopkins Woodland • 41.9012, -71.6845 | Burton Woodland • 41.9003, -71.7008 | Signe Phillips Woodland • 41.9020, -71.6679 | Scotstoun Town Forest • 41.8961, -71.6701 | Hawkins Pond • 41.9175, -71.7926 | Seldom Seen Farm • 41.9108, -71.6151
Steere Hill & Phillips Farm • 41.8937, -71.6132
Ben Garrity Woodland • 41.8987, -71.6202
Prospect Hill Farm • 41.8961, -71.6896
Sprague Farm • 41.9090, -71.7042
Steere-Comber Preserve • 41.9262, -71.6482
Kwandrans Property • 41.9153, -71.7874



Mother of Hope Camp

A ministry of the
Roman Catholic
Diocese of Providence

**Do you have a child
aged 5-12 years old?**
Our Day Camp is for you
2024 SUMMER DAY CAMP

- BUSING
- BOYS & GIRLS AGES 5 - 12
- WEEKLY & DAILY OPTIONS
- AFFORDABLE PRICING
- SPECIAL DISCOUNTS
- SECURE ONLINE REGISTRATION
- OUTDOOR CAMP ACTIVITIES
- FRIENDLY & PROFESSIONAL STAFF
- Live ~ Learn ~ Grow



**Mother of Hope Camp
is the reason why
we love summer!**

**On beautiful Echo Lake
in Chepachet, RI**
**June 17
through
August 9**
**1589 Putnam Pike,
Chepachet, RI 02814**
www.motherofhopecamp.com



www.motherofhopecamp.com
email:motherofhopecamp@dpvd.org
401-568-3580





EDUCATIONAL RESOURCES

Glocester offers its youth an excellent educational experience from birth through to highschool graduation!

Fogarty Memorial School

736 Snake Hill Road
North Scituate, RI 02857
401-568-6211

West Glocester Elementary

111 Reynolds Road
Chepachet, RI 02814
401-567-0350

Foster-Glocester Regional School District

The Foster-Glocester Regional School Committee is comprised of nine members.

Six are elected by the town of Glocester to serve staggered four-year term. The three members from the town of Foster serve two-year terms.

Ponaganset Middle School

7 Rustic Hill Road
Glocester, RI 02857
401-710-7500

Ponaganset High School

137 Anan Wade Road
Glocester, RI 02857
401-710-7500

Among the signature programs—STEM plus the arts—are animal science, plant science, biomedical science, business, computer science, construction and manufacturing, criminal justice, health and fitness (EMT) and pre-engineering. In the arts, music performance, education and technology and visual arts are highlights of the college-prep program.



Ponaganset Education Foundation

An independent, community-based, nonprofit organization, and an individual fund of the Rhode Island Foundation. Founded through the generous donation of Foster-Glocester residents and a matching grant of the RI Foundation. Its mission is to foster student excellence, teacher creativity, and school-based initiatives in the Ponaganset schools and to promote social justice through scholarships for first-generation college attendees.

https://www.fg.k12.ri.us/community/ponaganset_education_foundation

Acorn Academy LLC

174 Hartford Pike
Foster, RI 02825
Early childhood education center open
Mon – Friday, 7am – 5:30pm.
401-647-7241
acornacademyllyc@gmail.com

Chepachet Village Schoolhouse

1150 Putnam Pike
Chepachet, RI 02814
Child care center serving infants, toddlers and preschool children.
chepachetvillageschoolhouse@gmail.com
(401) 474-4647

The Learning Place Preschool, LLC

21 Terry Lane
Chepachet, RI 02814
Providing early care and education for ages 3-5.

Glocester Libraries

The library collections and special programs serve children, teens, and adults.

www.glocesterlibraries.org
401-949-2850 or 401-568-6077



JOIN THE GBA!

WHO CAN JOIN?

**Any business, organization, or person
having a business interest with
the community of Glocester.
*That means YOU!***

PROUD SPONSOR OF:

"GBA Member Guide"
"A Guide To Glocester"
"Welcome To Glocester" Signs
"Welcome to Chepachet" Banners
Santa & Reindeer Display
Family Fun Day
Trick or Treat on Main Street
Rose M. LaVoie Memorial Bench
Kathy Roberts Memorial Scholarships

And Contributing Sponsor of:

Ancients & Horribles Parade
Candlelight Shopping
Earth Day Clean-Up

**Help us build the business
community in Glocester!**

www.glocester.org

LEARN MORE...



SCAN ME



BUSINESS & PERSONAL SERVICES

Glocester is home to many businesses that offer specialized services to the community. GBA is honored to serve our entrepreneur neighbors. Our online business directory lists each business by name and also by category.

Your dog needs training or grooming? Check out Animal Care and Training. You have an Automotive need – a new vehicle, repairs to an old vehicle, or upgrade your sound system, local options available! Looking for a haircut? Check our beauty salons and barber shops. Accounting, appliance repair, septic maintenance—***look no farther than GBA!***

Selling or buying a home? Our expert real estate agents often live in Glocester and are extremely knowledgeable about the area, the school system, recreational activities, and proximity to highways for those who are commuting to Providence, Boston and beyond.

If you live and work in Glocester, we have ***contractors and services*** that cover your buildings from excavation to the basement to the roof and design and maintain the landscape around the building. Are you looking to buy a boat or upgrade docks on your waterfront property?

You can find it all here!



Federally Insured by NCUA

Own your vision.

Own your credit union.

Whether it's settling into a new home or giving your current one a makeover, you have the vision, we have the loan.

Own it.

Learn more at navigantcu.org

Navigant
CREDIT UNION

Soulshine

Center for Yoga & Healing

Yoga, Pilates, Meditation & More
Come discover the numerous benefits
of practicing yoga!

Try 2 classes for free! Use coupon code
"2free" when registering



Soulshine Center for Yoga & Healing
1020 Putnam Pike • Chepachet R.I. 02814
SoulshineRI.com • 401-314-9642

PINEWOOD

Where Friends & Neighbors Meet

pub & pizza

568-5660



Stop in for a Signature Pizza,
your favorite Stromboli or a Fresh
Pasta Sautee dish.

Indoor and outdoor dining

16 Terry Lane, Chepachet, RI
Pinewoodpub.com

2023 RI REALTOR of the Year



Coldwell Banker
Franklin/Cumberland Regional Office
Michelle.Keach@CBRealty.com
401-678-6274

I've had the privilege of being a
trusted advisor to countless clients
on their real estate journey.

Now, let's turn our focus to you.

From finding your perfect home to
navigating the complexities
of selling or investing,
I'm here to guide you
every step of the way.

Reach out today to
schedule your consultation.



MICHELLE KEACH



CPI Oil

(401) 568 - 8874

Terry Lane, PO Box U
Gloicester, RI 02814



Acorn Academy serves children from
6 weeks through 12 years old year-round.

Our Early Childhood Education program includes Infant, Toddler, and Preschool classrooms. During the school year, Acorn Academy has before and after school care for students at Captain Isaac Paine and West Gloicester Elementary Schools. Summer Camp is available during the summer for children entering kindergarten through fifth grade.

facebook.com/AcornAcademyELC
401-647-7241

Acorn Academy, LLC • 174 Hartford Pike
Foster, RI 02825



DONNA DIGIULIO

REALTOR ABR, CRS

Licensed in RI, MA & CT
401-829-3825

donna@williamsandstuart.com
www.digisellshomes.com

BUYING OR SELLING A HOME?

LET'S WORK TOGETHER!

For over 18 years, I've been helping people buy and sell real estate across RI, MA & CT. I've also been a resident of our great town of Gloicester for 23 years! With a keen understanding of the market and unsurpassed customer service, let's turn your real estate aspirations into reality. Contact me today and let's embark on this exciting journey together!



Bringing our favorite foods to the Glocester community

<p>OPEN AT 11:30 AM</p>		<p>Scan Me! Digital Menu and drinks!</p>	<p>PROUDLY Family Owned & Operated</p>
<p>WED - SUN</p>			<p>OUTDOOR DECK & LIVE MUSIC!</p>

102 Putnam Pike Harmony, RI 02814

401 - 349 - 2400 — @assadoskitchebar



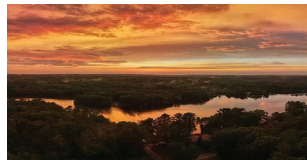
GLOUCESTER RHODE ISLAND

ECONOMIC DEVELOPMENT COMMISSION

*A Unique Experience in a
Small Town*

SHOP • DINE • FARMS • SERVICES
EXPLORE • EVENTS

www.glocesteredc.org



Gloucester is a rural town in northern Rhode Island. Over our 300 year history, Gloucester has maintained a favorable environment for small business. The town also is host to many acres of open land, which allows for hiking trails and outdoor recreation.

